

Yilong You
2020.1.9



bCom S

METTLER TOLEDO

Model

- 6/15kg dual interval

Display

- Amber backlight one-dot matrix

Keyboard

- 98 membrane keys with pressure point
- 140 preset keys with two layers
- Configurable function keys

Printer

- Thermal printer
- Support small label
- Support QR code
- 105mm/sec
- Roll diameter: max. 120mm

Power supply

- 100~240VAC, 50/60Hz
- Standby power consumption:<2.2W
- Working power efficiency: >85%

Interface

- 1 RS232 serial interface
- 1 RJ45 Ethernet interface
- 1 RJ11 interface for controlling the cash register
- 1 USB
- 1 reset key

Brief look at the three features of bCom S

- Easy Operation
- Robust
- Smart Management



Learn how to use in just one minute

Outstanding readability (lifecycle>30000hours!)

- Amber One dot matrix, bright and attractive
- Response time under minus ten degree <2 seconds



sales and prepack mode can be switched quickly by pressing one key, so easy!



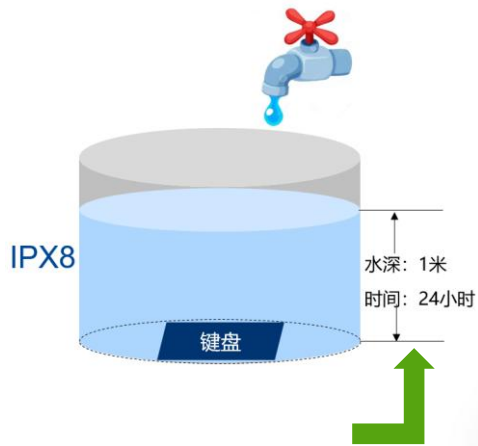
High performance printer module

- Spring open print head, easy to clean
- Drawer pull out mechanism for easy paper change and maintenance
- Effective printing width 40-62mm
- Small label printing with a minimum size of 25mm
- Automatic identification of label size

Still comfortable in a demanding retail environment



- Less than 2.2W power consumption when in standby mode



Quick response keyboard

- Keyboard IP degree: >IPX8
- Enhanced sale spray resistance (immersed in salty water for 3.5 months, keyboard still works)
- Extra long key life (>3 million times)



Large capacity than old product

Model	Memory
bCom	~8000PLU
bCom S	~10000PLU

Accurate, Quick Weight Stabilization

- Overload protection < 400% of maximum capacity
- The scale is easy to clean

Robust Construction

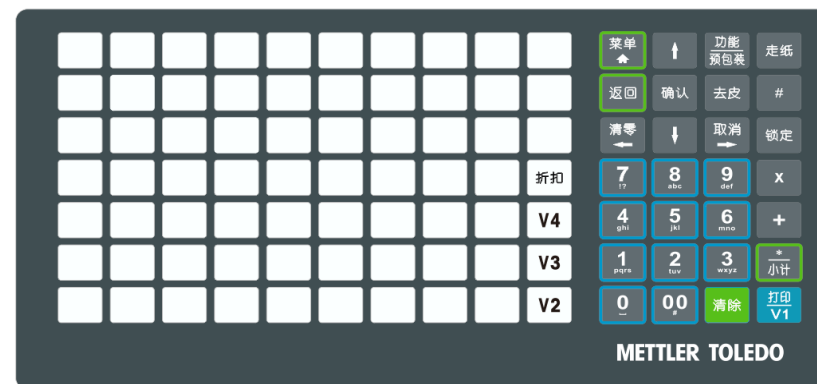
- Industrial-grade electronic components
- Hygienic Stainless steel 304 weighing platter, food grade, rust-proof, strong-torsion

bCom keyboard

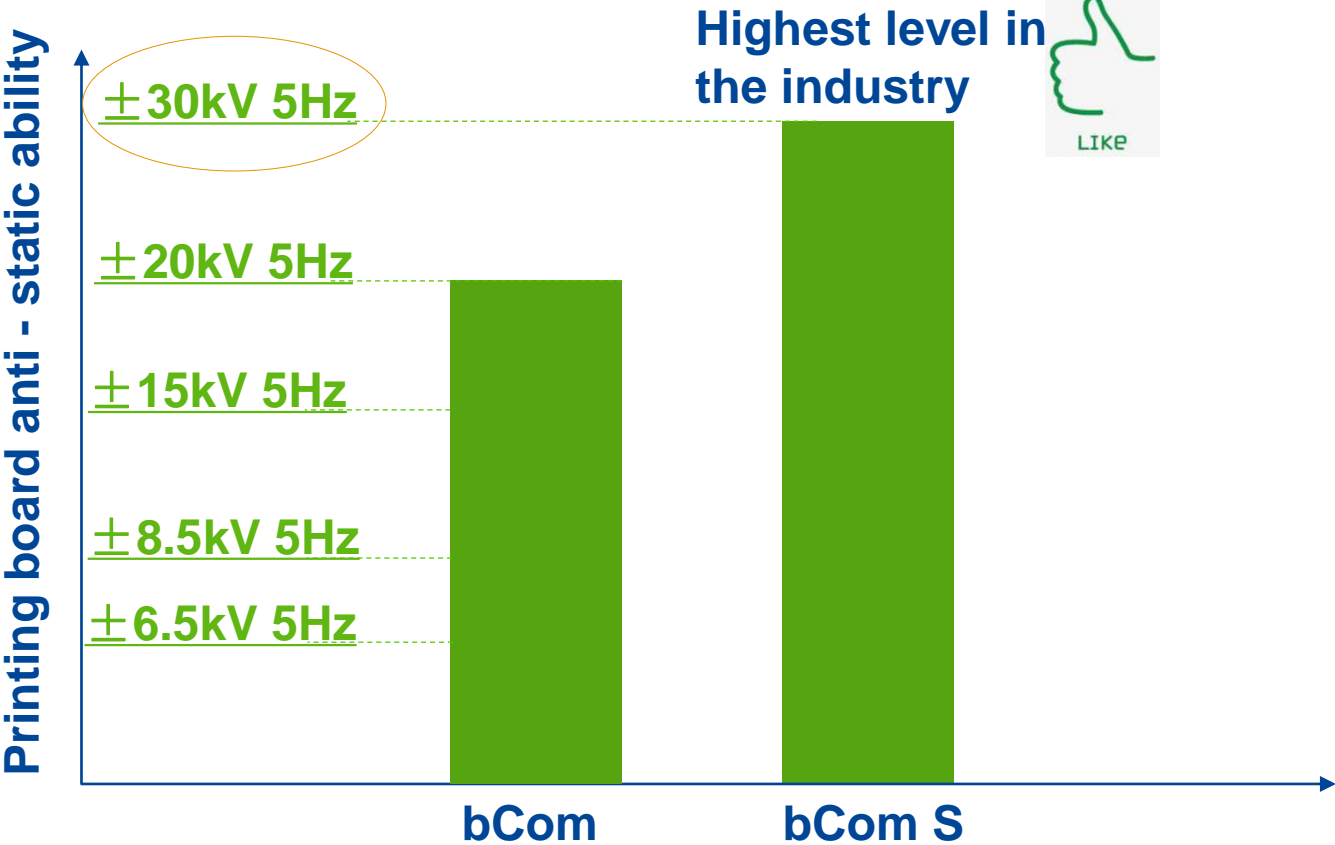


Immersed in salt water for 1 month,
and the keyboard start failure

bCom S keyboard



Immersed in salt water for 3.5 months,
the keyboard can still be used



Shock load test

- **Test Purpose:** To simulate the customer scenarios that goods falls on scale from certain height.
- **Test criteria:** Check zero change, mechanical appearance and measurement performance after test.
- **Test setup**

Item	Setup
Height	15 cm
Load weight	15 kg
Impact times	10 times
Load	Sand bag



硬质泡棉 Hard plate

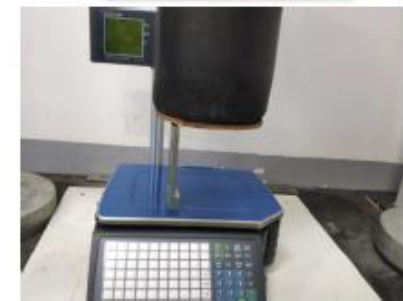


冲击10次

Shock 10 times



载荷重15.02 kg



冲击高度15 cm

Shock height 15cm

Shock load test result

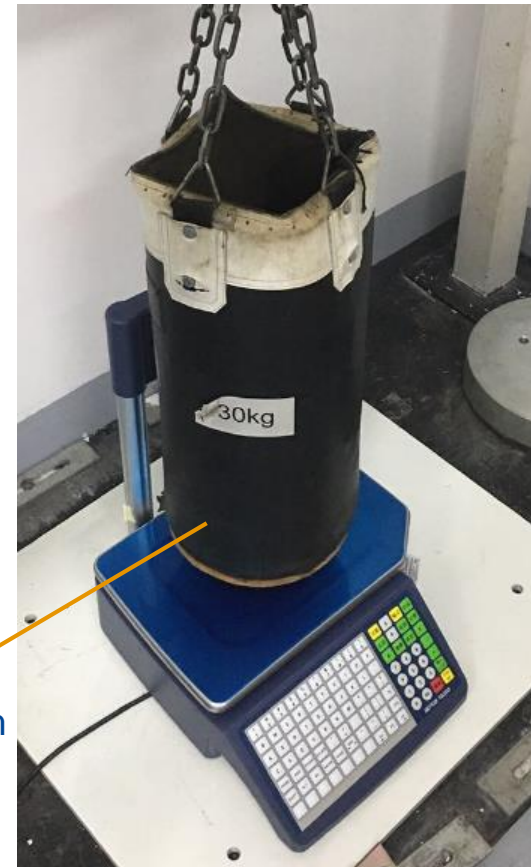
- bCom S can pass test by adjust the sandbag structure based on PQA defined test.
- bCom S performs better than old bCom after improvement, like tightening limitation.
- No quality complain from market for old bCom.
 - (0.03%, 4pcs LC warranty in last one year)

	Product	Zero change	Baseline	Result
#1	bCom S	28g	<75g	Pass
#2		36g		Pass
#3	bCom	706g		Fail
#4		552g		Fail

bCom S VS bCom



Remove the hard board from sand bag



Flexible PC tool and scale application meet your various needs

Comprehensive Network Communication

- Stable, secure
- DHCP for automatic IP setup
- Fully compatible with the existing MT legacy products in the same LAN

Convenient Setup and Configuration

- UX-friendly PC tool
 - Upgrade firmware automatically by clicking one key.
 - Clone the data of one scale to other scales
- USB Mass Storage
 - Simple data transfer from scale/scale
 - Update item data
 - Copy scale configuration
 - Update firmware
 - Backup/restore scale data



Feature-rich Software

- Experience from many years of customer requirements
- Sales and prepack
- QR code (reduce the loss of print head and improve the probability of scanning)
- Support small label, reduce the cost of consumables
- Rapid price change
- Regulatory compliance (e.g. traceability)
- Monitor print head and keyboard usage, provide early warning, reduce downtime and maintenance cost

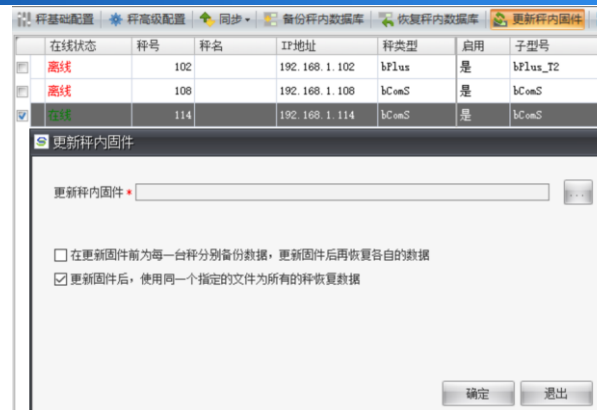
Straightforward Keyboard Customization

- Clever key mapping both for item and function.
- 70 preset keys per layer (total 140)

No.	步骤	原来安调
第1台秤	1	秤上手工设置IP地址、子网掩码；服务器IP、端口号；
	2	升级秤内程序；
	3	初始化电子秤
	4	从SM下发各项秤上参数
	5	下发标签格式
	6	下发条码格式
	7	下发通用标签
	8	下发商品资料
	9	下发附加信息
	10	测试打印效果

No.	步骤	原来安调
第2台秤	1	秤上手工设置IP地址、子网掩码；服务器IP、端口号；
	2	升级秤内程序；
	3	初始化电子秤
	4	从SM下发各项秤上参数
	5	下发标签格式
	6	下发条码格式
	7	下发通用标签
	8	下发商品资料
	9	下发附加信息
	10	测试打印效果

No.	步骤	原来安调
第N台秤	1	秤上手工设置IP地址、子网掩码；服务器IP、端口号；
	2	升级秤内程序；
	3	初始化电子秤
	4	从SM下发各项秤上参数
	5	下发标签格式
	6	下发条码格式
	7	下发通用标签
	8	下发商品资料
	9	下发附加信息
	10	测试打印效果



VS

No.	步骤	现在安调
第1台秤	1	秤上手工设置IP地址、子网掩码；服务器IP、端口号；
	2	升级秤内程序并自动初始化电子秤
	3	从SM下发各项秤上参数
	4	下发标签格式
	5	下发条码格式
	6	下发通用标签
	7	下发商品资料
	8	下发附加信息
	9	测试打印效果
	10	备份第一台秤的配置信息

No.	步骤	现在安调
第2~N台秤	1	秤上手工设置IP地址、子网掩码；服务器IP、端口号；
	2	升级秤内程序并自动初始化电子秤，自动备份的第一台秤的配置信息下发到第2~N台秤(自动)
	3	
	4	
	5	
	6	
	7	
	8	
	9	
	10	测试打印效果

The more scales you install, the more time you saved!



QR code (reduce the loss of print head and improve the probability of scanning)

bCom



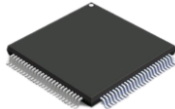
Fixed function key, display and keyboard



Normal interface
-RS232, Ethernet, Cash box



Stand by power ~ 7.0W



2MB bCom



No backup database



EAN13, Code128



No DHCP

bCom S



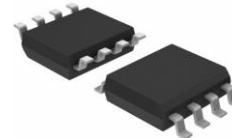
Configurable PLU and function key, super water-proof keyboard (IPX8), super long key life (>3 million)



More interface
-USB, RS232, Ethernet, Cash box



Stand by power < 2.2W



10 MB bCom S



Automatic backup database



EAN 8, 13, 13+5, 128
QR-code

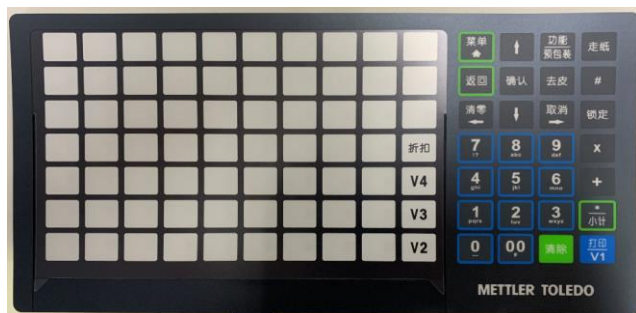


DHCP



Change price temporarily

Easy



Familiar but more convenient – less training

Feature

- Easy to operator
 - Similar to bCom / bPro
 - Quick key response
 - Prevent wrong operation of pressure point on keyboard
 - Customizable keyboard
 - 70 preset key, two layers total 140
- Advanced printer design
 - Print speed 105mm/s
 - Automatically identify the loaded label size

Benefit

- Reduce training cost
- Easy to use
- Easy to configure the key (function/PLU preset key)
- Faster call to PLU
- Easy to change price
- Easier and faster paper loading and printing
- Save the cost of label (small label)

Robust



Long life industrial components

Feature

- Robust equipment structure
 - Stainless steel 304 platter: rust proof, food safety, deformation proof
 - Keyboard IP degree: >IPX8
 - Enhanced salt spray resistance (immersed in salty water for 3.5 months, keyboard still works)
 - Extra long key life (>3 million times)
- Easy to read and provide more information
 - Amber backlit display with additional text lines
 - Long life industrial components
 - Load cell: high speed processing of load signal under various conditions
- Product capacity far exceeds that of the previous generation
 - 10M Memory

Benefit

- Easy to clean
- additional text lines to provide more information
- Stable, accurate and fast workflow throughout its life
- Large operating temperature range

Smart



Smart, safe and efficient

Feature

- Feature rich software
 - QR code
 - Support small label to reduce Consumables cost
 - Rapid price change
 - Regulatory compliance (e.g. traceability)
 - Monitor the use of print head and keyboard, provide early warning and reduce downtime
- Connect to LAN for remote access
 - Easily upgrade scale firmware, distribute data, extract reports
- Easy to load configuration
 - 1 USB interface
 - Convenient PC Tools
- USB data mass storage
 - Copy configuration from USB
 - USB automatically backs up data

Benefit

- Rich functions based on years of customer demand
- Ensure data accuracy and reduce losses and complaints
- High maintenance efficiency
- Set up network automaticall
- Flexible commodity data support (scale configuration and PLU data)
- Quickly and easily configure the scale
- Simple data transmission